



NEW SITE DEVELOPMENT

- 5,800 SF
- BUILD TO SUIT, GROUND LEASE OR INLINE LEASING

2017 DEMOGRAPHICS POPULATION

- 3MILE 26,621
- 5MILE 75,167
- 7MILE 173,553

TOTAL HOUSEHOLDS

- 3MILE 11,211
- 5MILE 30,631
- 7MILE 68,837

MEDIAN HH INCOME

- 3MILE \$84,701
- 5MILE \$70,959
- 7MILE \$45,845

PROPERTY HIGHLIGHTS:

- 5,800 SF FOR NEW SITE DEVELOPMENT
- GREAT SITE ON N. BURDICK ST. IN FAYETTEVILLE WITH CLEAR EXPOSURE
- VILLAGE OF FAYETTEVILLE TB & O ZONING
- EXCELLENT TRAFFIC COUNTS AND DEMOGRAPHICS
- 2MILES FROM 481 NORTH & SOUTH
- ALL SURVEYS, TOPGRAPHIC AND BOUNDARY MAP FURNISHED UPON REQUEST
- PERFECT FOR ANY RESTURANT, RETAIL OR OFFICE SPACE

TRAFFIC COUNTS:	
E. GENESSE STREET	23,203 AADT
N. BURDICK STREET	13,403 AADT
SOURCE: NYS DOT 2015	

FOR MORE INFORMATION, PLEASE CONTACT:

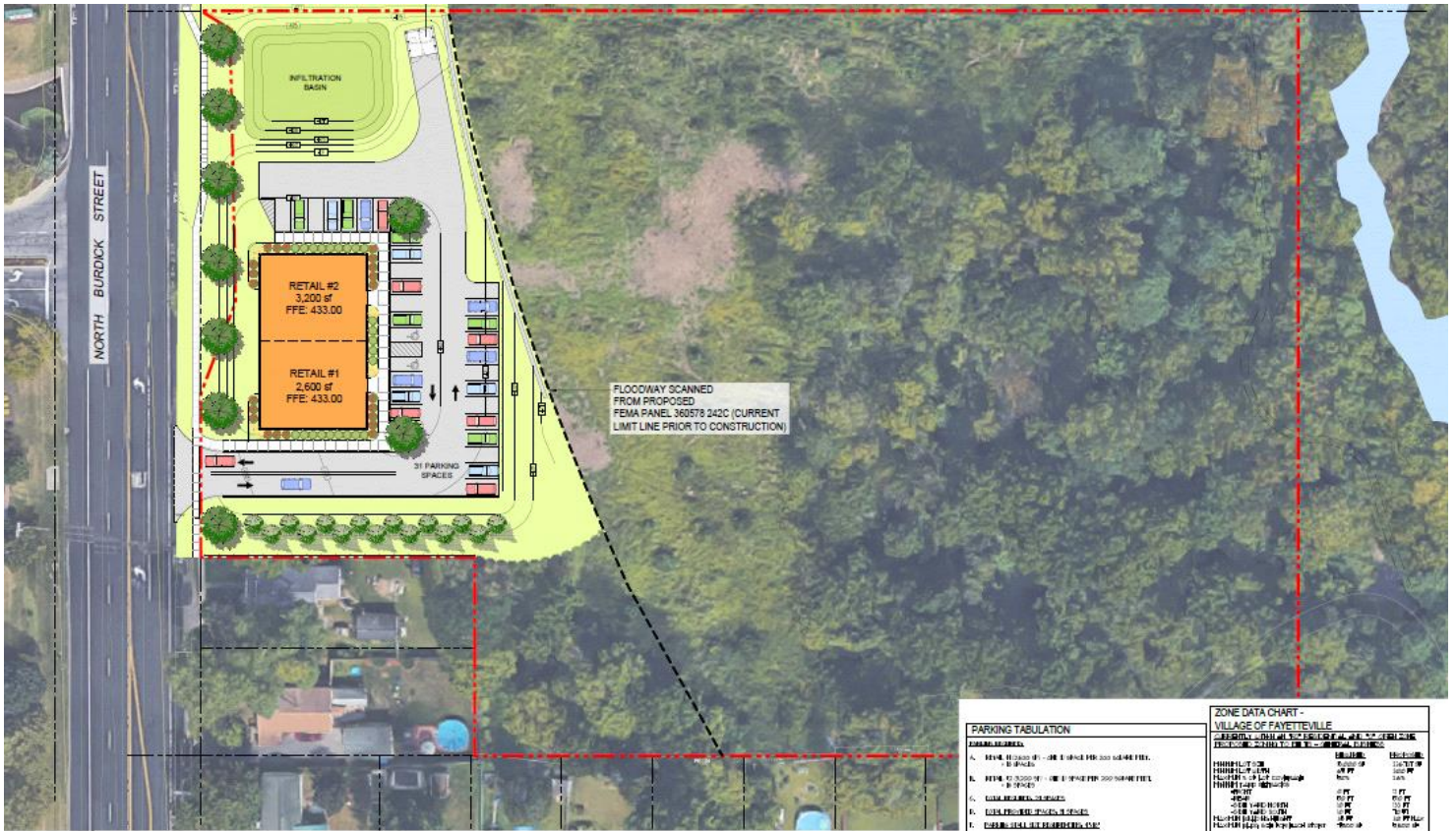
ERANNAN SHATTUCK
315-471-5462
ESHATTUCK@WESTLAKEDEV.COM



WESTLAKE DEVELOPMENT, LLC
6296 FLY ROAD
E. SYRACUSE, NY 13057



WESTLAKE DEVELOPMENT, LLC



FOR MORE INFORMATION, PLEASE CONTACT:
ERANNAN SHATTUCK
 Office#: 315-471-5462
 Email: eshattuck@westlakedev.com



WESTLAKE DEVELOPMENT, LLC
 6296 FLY ROAD
 E. SYRACUSE, NY 13057